

## WATER

The District was awarded grant funding for Phase 1 of the Meter Replacement Project. This will consist of planning, design, and installation of approximately 340 water meter replacements and appurtenances throughout the District Service Area Boundary. New meters will include AMR (automatic meter reading) technology, allowing the District to more quickly identify leaks and provide a more reliable and efficient way of measuring water consumption. WhiteHawk Construction was awarded the bid. Construction began August 1<sup>st</sup>, 2022. The project is 70% complete as of September 30<sup>th</sup>, 2022.



WhiteHawk Construction installing new radio read meters

PACE Engineering is working on Planning and Design of Well 9 Improvement Project located at Washburn Park. 90% design is anticipated to be complete by the end of the year, as is the funding application.

## SEWER

WWTP--Major Tasks Worked On:

1. Clarifier excavation was completed, and formwork was prepared for foundation.
2. Rock excavation and disposal continued.
3. Clarifier foundation was prepared.
4. Conduit installation and improvements in the control building have continued.
5. PG&E design was finalized.
6. Sludge lagoon sludge and existing liner has been completely removed.
7. Bird nest monitoring by ENPLAN has concluded.
8. Clarifier rebar and formwork construction with water stops has begun.
9. The Return Pump Station structure has been set.
10. Sludge lagoon underdrain has been installed.
11. Grading on the sludge lagoon bottom and sides has been finished in preparation for liner installation.
12. Sludge has been regularly turned for drying in the dry oxidation ponds and is now ready for hauling and disposal.

Collections--Major Tasks Worked On:

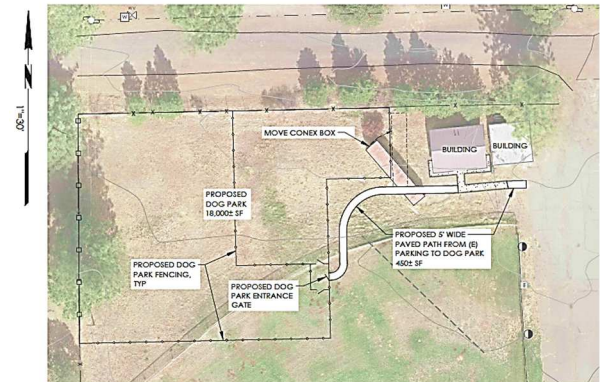
1. RTA completed relocation of a conflicting 10-inch water main along Sapphire Rd.
2. RTA completed three open-cut spot repairs.
3. The CIPP lining and internal spot repair subcontractor, Nor-Cal Pipeline Services, completed CCTV pre-inspection for all full-length sewer mains to be lined.
4. RTA completed an additional spot repair that was identified during CCTV pre-inspection for the sewer main to be lined between Highway 299 and Tamarack Ave.
5. RTA completed open-cut replacement of the sewer main along the private driveway off Sapphire Rd.
6. RTA completed removal and replacement of five existing rod holes that were identified during CCTV pre-inspection to facilitate CIPP installation.
7. Nor-Cal Pipeline Services completed CIPP installation of all full-length sewer mains.

## POOL

The last day of the Pool season was September 2, 2022. Opening Day for the 2023 season is scheduled for Sunday, June 11, 2023. If you have any questions please contact us at the Burney Water District Office at (530) 335-3582.

## PARKS

The District was awarded \$177,952.00 grant funding from State of California - Natural Resources Agency Department of Parks and Recreation -2018 Parks Bond Act Per Capita Grant Program. The funds will be used to construct a new dog park with lighting, benches and signage at the Northeast end of Washburn-Bue Park. The District will be going out to bid on the project in the near future.



## CURRENT GRANT PROJECTS

- Wastewater Treatment Plant Improvement Project (\$6,148,000)
- Collection System Improvement Project – Phase 2 (\$1,775,000)
- Well 9 Improvement Project – Planning and Design (\$500,000)
- Water Meter Replacement Project – Phase 1 (\$718,477)
- Furry Friends Playground Project (\$177,952)
- CalOES PSPS Grant (\$280,000) Emergency Generators

## WWTP Construction Photos



Sludge lagoon getting a new liner



Construction of the new Clarifier



Preparing the pad for the new Generator

## Burney Water District Mission

We are committed to providing a safe and reliable water supply, environmentally safe disposal of wastewater, and responsible governance of our pools and parks.

## EXPLORERS CORNER



Ribbon Cutting Ceremony was held on June 19, 2018 to celebrate the opening of a new pedestrian bridge over lower Hat Creek

The Hat Creek is an angler's paradise. Known during the summer months to be especially popular to float from the Hat Creek Powerhouse No. 2 downstream to the Hat Creek County Park. Beautiful walking trail alongside the river which connects Highway 299E to the Hat Creek Powerhouse No. 2.



Hat Creek Powerhouse No. 2 built in 1921 and was commissioned Sept. 28, 1921



## NEWSLETTER

Quarter 3 2022

20222 Hudson Street

Burney, CA 96013

Phone: (530) 335-3582

Fax: (530) 335-2189

Emergency after Hours: (530) 238-7774